

Smart People, Smarter Ports

AI in HR at Port of Antwerp-Bruges

Shaping the AI-ready workforce



Port of
Antwerp
Bruges
International



Manon Van Goethem

Training Executive – APEC

Port of Antwerp-Bruges



Smart People, Smarter Ports

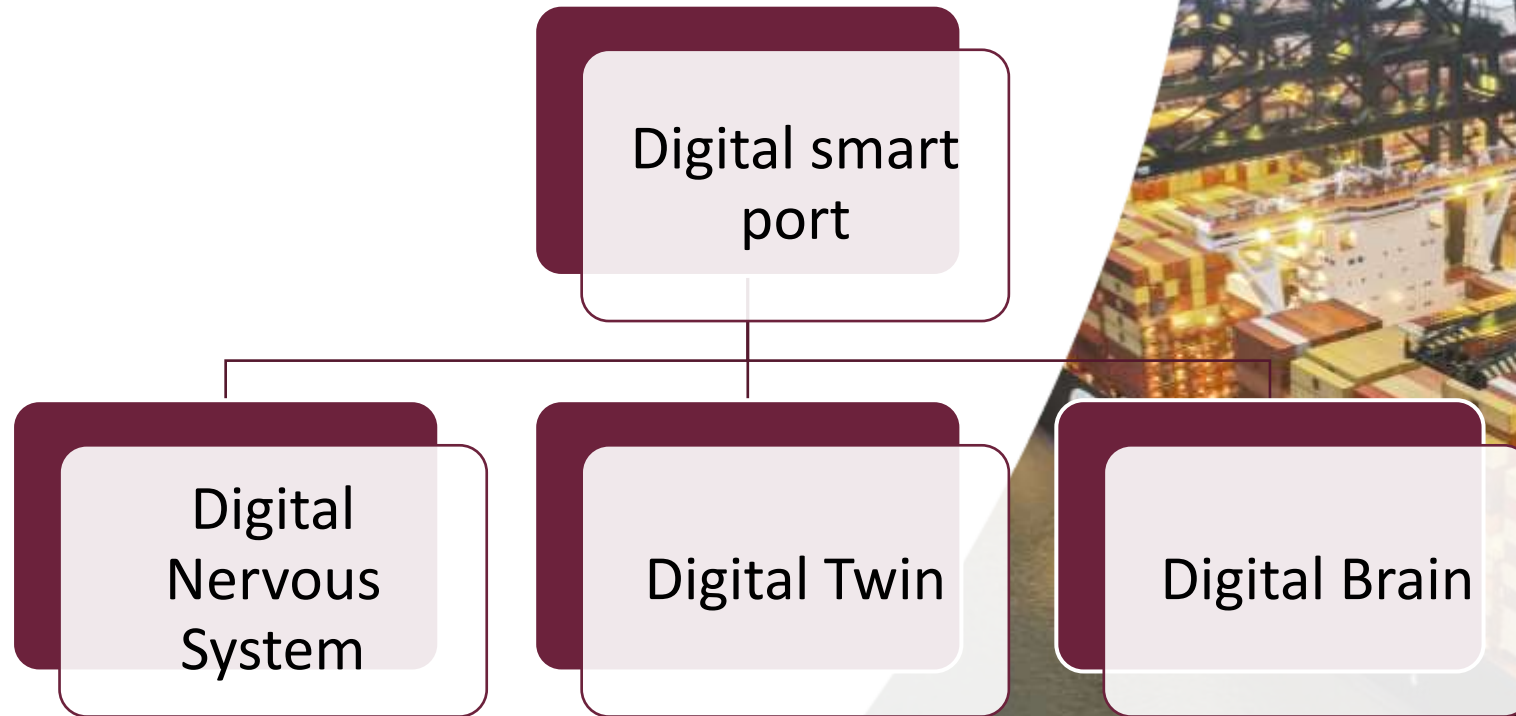
Shaping the AI ready workforce



Port of
Antwerp
Bruges
International



Port of Antwerp-Bruges as a smart port





DIGITAL NERVOUS SYSTEM

sensor devices inspired by the five senses





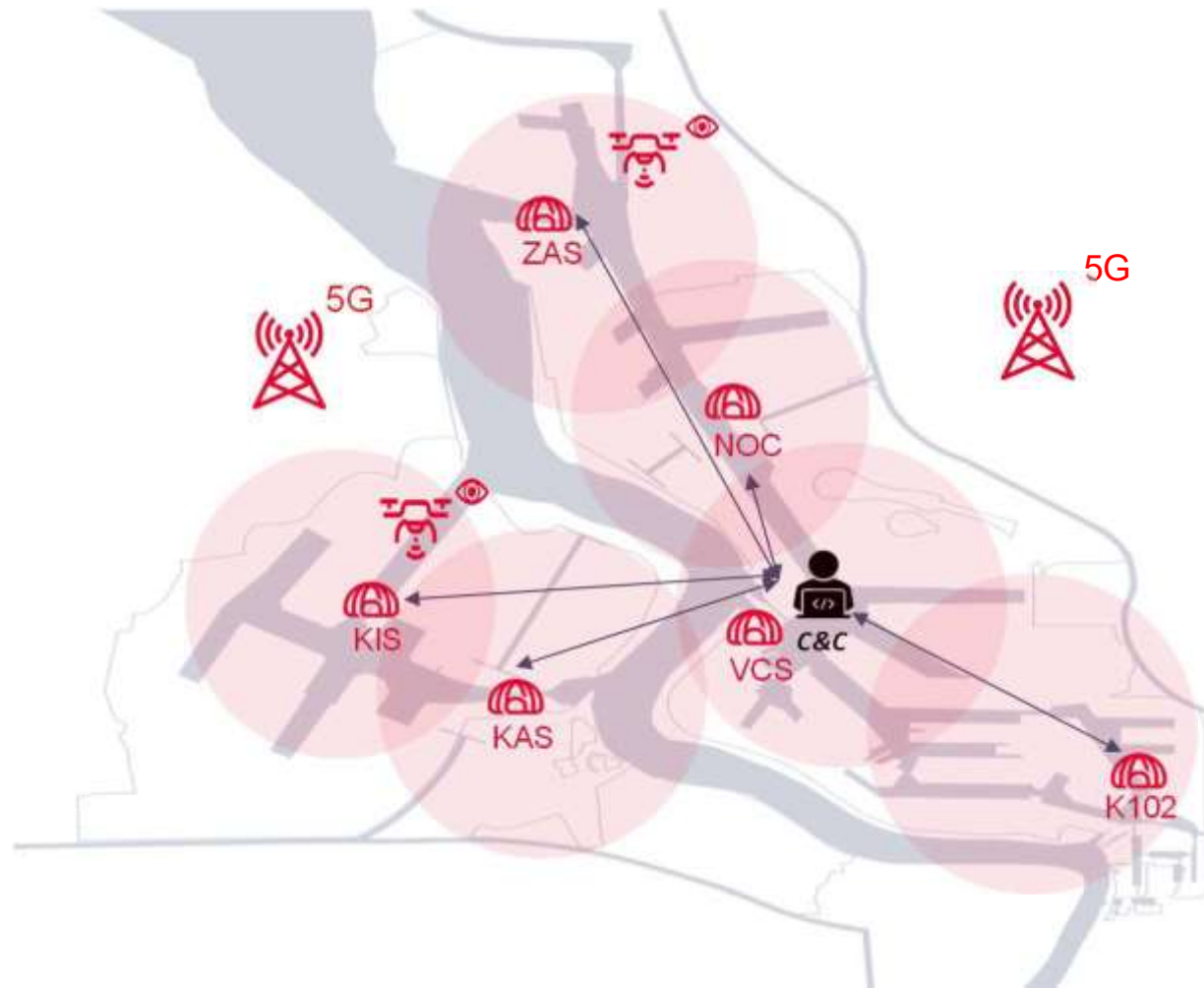
1st Automated Drone at POAB



Port of
Antwerp
Bruges
International



Eyes of the Port of Antwerp-Bruges



Use-cases

Incident management

Floating debris detection

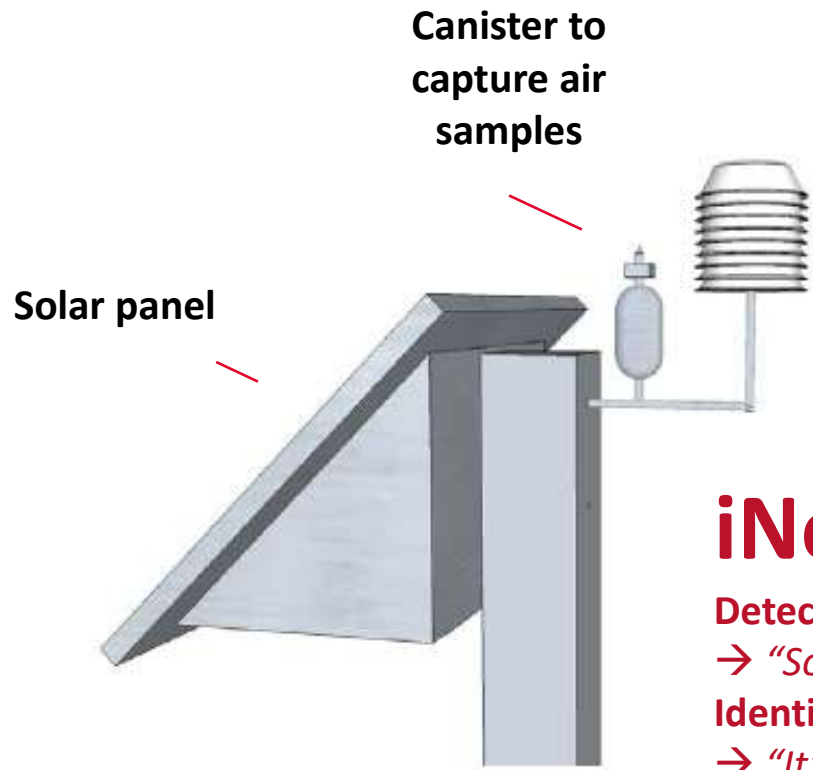
Oil spill management

Infrastructure inspection



Nose of the Port of Antwerp-Bruges

iNose | Intelligent electronic nose



iNose

Detection

→ *"Something present"*

Identification

→ *"It's probably component X"*

Quantification

→ *"Density is high/low"*



Digital Smart Port

Digital Twin

“A digital twin of the port: from analog to digital”



Digital Twin

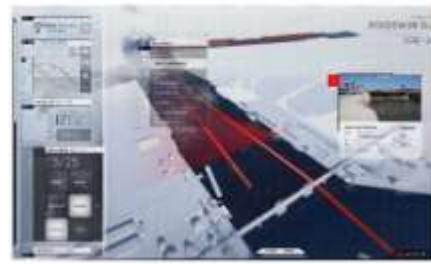


AR-app foto atrium

2017

2018

APICA concept

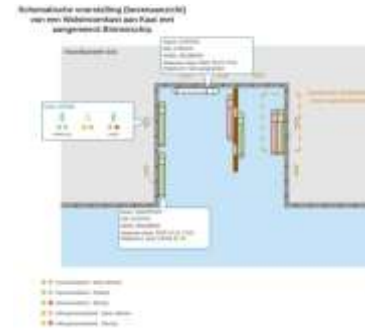
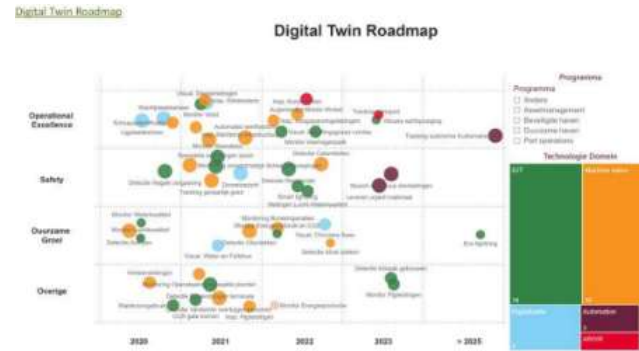


POV Digital Twin v1.0

2019

2020

Digital Twin Roadmap operationalization



Digital Twin first operational use-cases

2021

2022

Digital Twin Operational



Digital Twin integrated in IT-infrastructure & development

2023



**Real-time 24/7 view of all activities
in and around the port**

Digital Smart Port

Digital Brain





Leveraging the power of data

APICA the digital ecosystem

Advanced Port Information and Control Assistant



Port of
Antwerp
Bruges
International



APICA Ecosystem

Advanced Port Intelligence & Coordination Assistant



APICA Digital Twin

Virtual Replica of the Port



APICA Chat

MS Teams Assistant



APICA Planner

Planning Optimizer



APICA Vision

Smart Cameras



APICA Navigator

Waze of the Port



OCR

APICA OCR

Text extraction



APICA Process Intelligence

Process Optimisation



Work WITH AI

AI helps us but we keep the final decision



Port of
Antwerp
Bruges
International



AI in HR department



Port of
Antwerp
Bruges
International

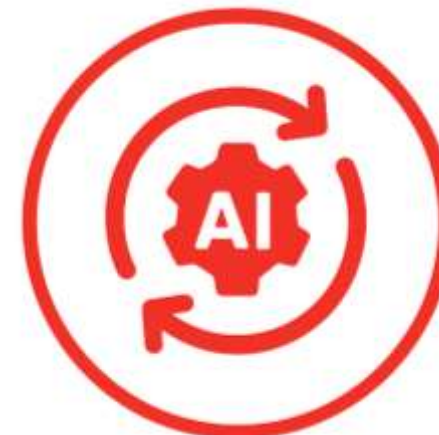




Generative AI



Chatbots & AI Agents



RPA & automation AI

Proper onboarding

Enrich technical skills

Virtual trainings



Port of
Antwerp
Bruges
International



Learning and Development on MyPort

The screenshot shows the 'Learning' section of the MyPort platform. At the top left is the Port of Antwerp Bruges logo and a 'Learning' dropdown menu. A search bar contains the text 'Search for actions or people'. To the right are icons for search, a checkmark, a bell, and a user profile. Below this is a 'Learning' header with an information icon, a 'My Classes' button, and a list icon. A secondary search bar is labeled 'Search for Learning' and includes a 'Browse Library' link. The main content area features a large banner with the text 'Welcome in the new learning experience' and a 'More info' button. The banner image shows two men in hard hats and safety vests talking. Below the banner is a section titled 'Required Learning'.

VR Training Fire fighting



APEC

Smart Port Course

23/02-20/03 ONLINE

30/03-04/04 LIVE IN ANTWERP



Port of
Antwerp
Bruges
International



**There are no smart
ports without smart
people**



**Port of
Antwerp
Bruges
International**



Thank you



Port of
Antwerp
Bruges
International

